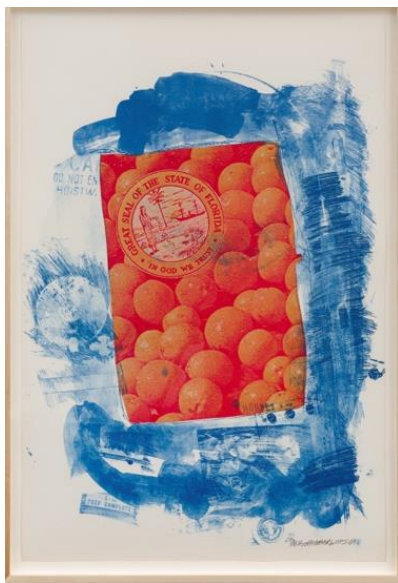




GEMINI G.E.L. LLC

***Gemini G.E.L. to Present Landmark Rauschenberg Works and Recent Editions in Celebration of Six Decades of Artistic Collaboration***

Gemini G.E.L.'s presentation will also feature recent editions by Thomas Demand and Toba Khedoori, alongside historic works by John Baldessari, Ken Price, Richard Serra, and Frank Stella



Robert Rauschenberg  
*Banner (Stoned Moon Series)*, 1969  
138.4 x 91.4 cm (54 1/2 x 36 in.)  
4-color lithograph  
Edition of 40



Robert Rauschenberg,  
*Pull (Hoarfrost Editions)*, 1974  
215.9 x 121.9 cm (85 x 48 in.)  
Offset lithograph and screenprint transferred to  
collage of paper bags and fabric  
Edition of 29

**LOS ANGELES, CA** — Gemini G.E.L., the renowned publisher, gallery, and artists' workshop, is pleased to announce its participation in Art Basel Miami Beach from December 3–7, 2025. The booth will highlight works celebrating Robert Rauschenberg's Centennial, alongside recent editions from Thomas Demand and Toba Khedoori, and seminal works by John Baldessari, Ken Price, Richard Serra, and Frank Stella. A participant since 2003, Gemini's 2025 presentation brings together landmark collaborations and new editions that chart Gemini's enduring legacy of innovation in printmaking and editioned sculpture. This presentation reflects six decades of artistic collaboration and offers a preview of exhibitions planned for Gemini G.E.L.'s 60<sup>th</sup> anniversary in 2026.

*"Gemini G.E.L.'s presentation at Art Basel Miami Beach is the perfect lead into our 60<sup>th</sup> anniversary in 2026,"* said Elisabetta Setzu, Senior Director at Gemini. *"It highlights our historic partnerships with legendary artists like Rauschenberg, Serra, and Stella, as well as our ongoing*



---

GEMINI G.E.L. LLC

*commitment to fostering experimentation and supporting new editioned work by artists like Thomas Demand and Toba Khedoori. We always look forward to our annual presentation at one of the most exciting fairs of the year.”*

Anchoring the presentation are works by **Robert Rauschenberg**, honoring both his Centennial year and four-decade collaboration with Gemini, in dialogue with the gallery’s current exhibition dedicated to the artist, on view in Los Angeles through December 19, 2025. Rauschenberg’s works include two monumental prints from the *Stoned Moon Series* (1969), *Sky Garden* and *Banner*, which pay tribute to his lifelong fascination with technology and nature, combining NASA imagery with Floridian landscape. These are joined by ethereal textile works from his *Hoarfrost Editions* (1974), *Pull* and *Scrape*, and three sculptures, *Rec*, *Bevel*, and *Center*, from *Tibetan Keys and Locks* (1986), showcasing Rauschenberg’s expansive material vocabulary and his spirit of global collaboration.

The booth will also feature recent projects by German artist **Thomas Demand** and Australian-born **Toba Khedoori**, demonstrating Gemini’s ongoing commitment to technically ambitious, process-based editions. A selection from Demand’s *Portals* (2024), which translates architectural structures into layered compositions that merge lithography and embossing, will be on view, highlighting the technical construction and process-driven nature of the series. Khedoori’s three-panel lithograph and four mezzotints, published earlier this year, spotlight her precision and control within complex, large-scale print formats. Shown along with her monumentally scaled *Untitled* (2018) chine-collé etching, these works investigate shadow, texture, and the subtle variations made possible through different print processes.

Gemini will further showcase its rich history of artistic collaborations through works by **Ken Price**, **Richard Serra**, and **Frank Stella**. Ken Price’s *Figurine Cups* (1970) and *Interiors* (1972) are early key works that explore the artist’s integration of sculptural and printed forms. Selections from the series will be on view, alongside an example of glazed earthenware cups from 1991. Two of Richard Serra’s series, *Bights* (2012) and *Composites* (2019), present distinct approaches to the printmaking process. While differing in technique, both are defined by dense, textured surfaces and material weight, paying homage to the artist’s five-decade-long relationship with Gemini. Frank Stella’s *Aluminum Series* (1970) and *River of Ponds* (1971) demonstrate his rigorous exploration of structure, color, and formal systems, expanding upon the innovations of his early shaped canvases.

Completing the presentation are **John Baldessari’s** *Hands & Fish* (2017) and *Big Catch* (2016). Though independent works, the shared imagery of fish and fisherman displayed together playfully nods to one of Florida’s quintessential leisure activities.

Gemini G.E.L.’s presentation will be on view at Art Basel Miami Beach, Booth F13, December 3–7, 2025.

###



---

GEMINI G.E.L. LLC

### **About Gemini G.E.L.**

Gemini G.E.L. (Graphic Editions Limited) is a Los Angeles-based publisher, gallery, and artists' workshop for limited-edition fine art prints and sculptures located on Melrose Avenue in the heart of the city's arts and design district. Two on-site galleries—one of which was designed by Frank Gehry and completed in 1979—showcase the works Gemini produces.

Gemini has collaborated with the most influential artists of the late 20th and early 21st centuries, including John Baldessari, Vija Celmins, Tacita Dean, Philip Guston, Ann Hamilton, David Hockney, Jasper Johns, Ellsworth Kelly, Toba Khedoori, Roy Lichtenstein, Julie Mehretu, Claes Oldenburg, Robert Rauschenberg, Ed Ruscha, Analia Saban, and Richard Serra, among others.

Some of the era's most celebrated editioned works have been produced at Gemini through lithography, etching, screenprinting, and various sculptural media. Collaboration is strictly by invitation only, and many artists return over decades to embark on new projects, reflecting the long-standing relationships and innovative spirit that define Gemini.

The Gemini G.E.L. archive is held at the National Gallery of Art, Washington, D.C., and in 2026 Gemini will celebrate its 60th anniversary, affirming its place as the longest-standing contemporary gallery in Los Angeles and one of the most influential artists' publishers in the world.

Gemini was founded in 1966 by Sidney and Rosamund Felsen, Stanley and Elyse Grinstein, and Ken and Kay Tyler, who left in 1973. Felsen and Grinstein continued to run Gemini for nearly the next five decades. Gemini is now stewarded by the next generation. Suzanne Felsen, Joni Weyl Felsen, Ayn Grinstein and Ellen Grinstein Perliter ensure that Gemini continues with the same ethos: to bring artists' visions to life through creativity, problem-solving, experimentation, and innovation.

Follow us on Instagram @geminigel and learn more at [Gemini G.E.L.](https://www.geminigel.com/exhibitions/) (<https://www.geminigel.com/exhibitions/>)

### **Media Contact**

Kat Harding, [kharding@fitzandco.com](mailto:kharding@fitzandco.com), (646) 589-0923

Grace MacDonald, [gmacdonald@fitzandco.com](mailto:gmacdonald@fitzandco.com), (650) 823-7333